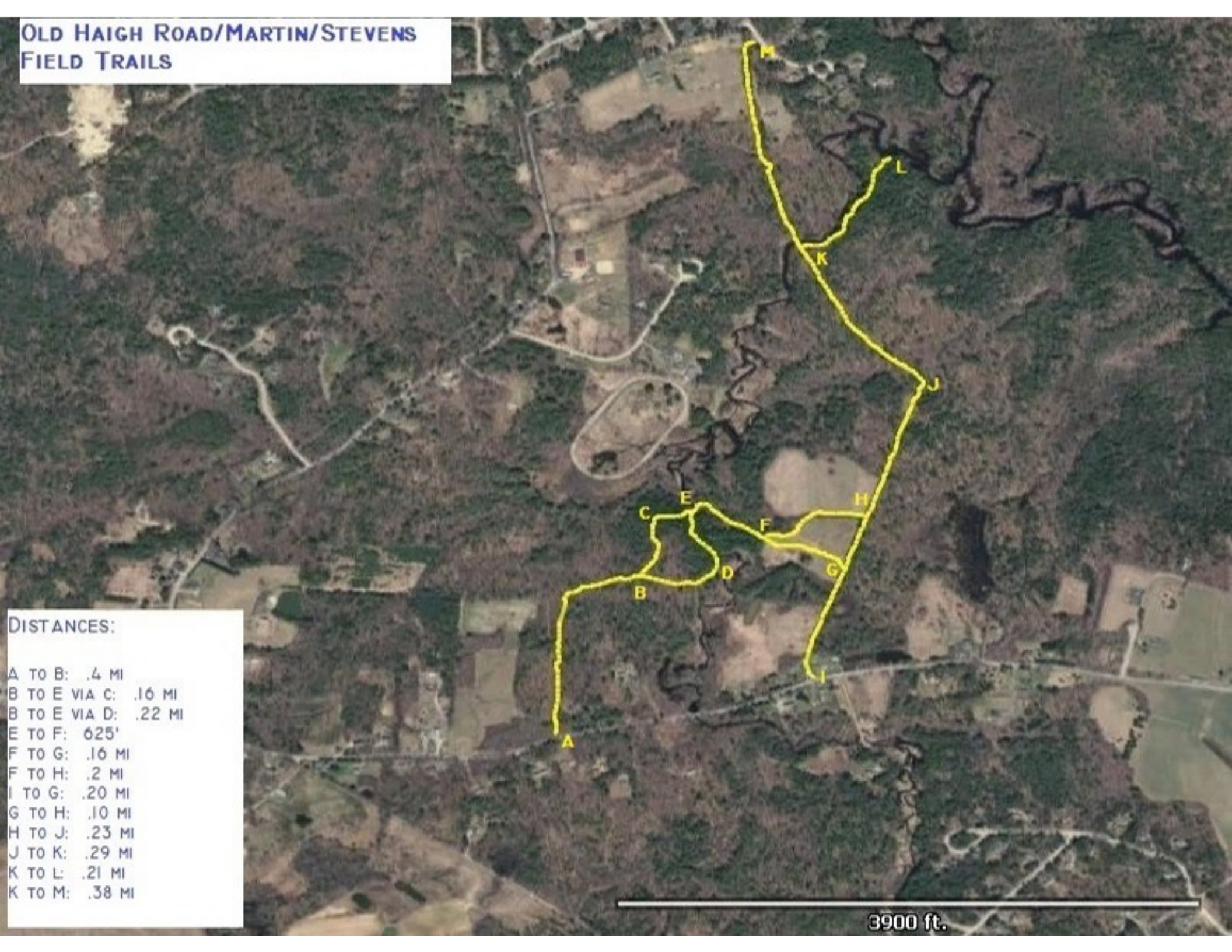


OLD HAIGH ROAD/MARTIN/STEVENS FIELD TRAILS

DISTANCES:

A TO B: .4 MI
B TO E VIA C: .16 MI
B TO E VIA D: .22 MI
E TO F: 625'
F TO G: .16 MI
F TO H: .2 MI
I TO G: .20 MI
G TO H: .10 MI
H TO J: .23 MI
J TO K: .29 MI
K TO L: .21 MI
K TO M: .38 MI



3900 ft.