

**SUMMARY OF PROPOSED DPW PROGRAM / SITE AMENITIES:**

**TOWN HALL: 8,000 SF**

**POLICE (OFFICE): 4,600 SF**

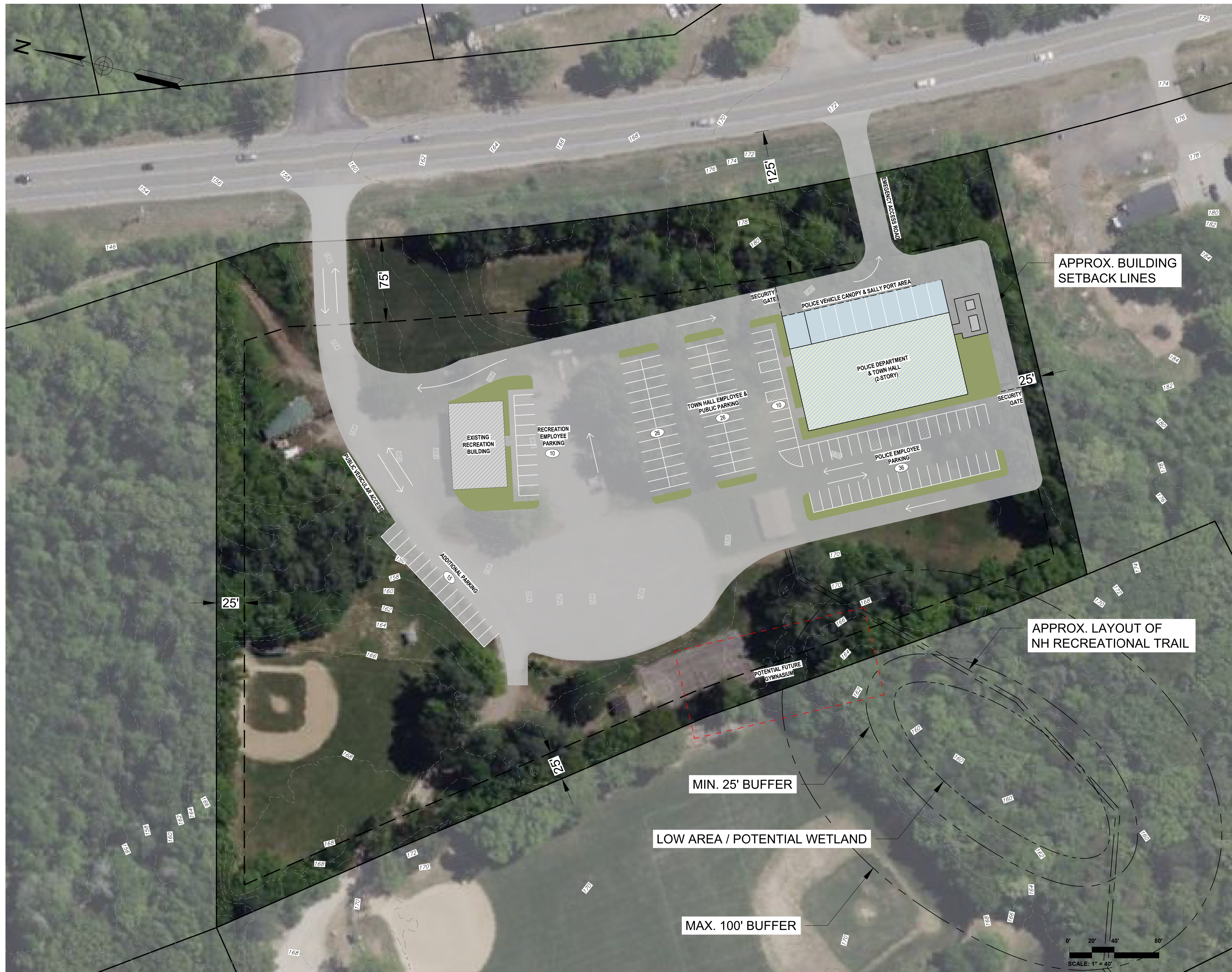
**POLICE (EMPLOYEE FACILITIES): 6,100 SF**

**CANOPY: 3,360 SF**

**SALLY PORT: 900 SF**

**UTILITIES: 2,100 SF**

**EMPLOYEE PARKING / PUBLIC PARKING**



**SUMMARY OF PROPOSED DPW PROGRAM / SITE AMENITIES:**

**TOWN HALL: 8,000 SF**

**POLICE (OFFICE): 4,600 SF**

**POLICE (EMPLOYEE FACILITIES): 6,100 SF**

**CANOPY: 3,360 SF**

**SALLY PORT: 900 SF**

**UTILITIES: 2,100 SF**

**EMPLOYEE PARKING / PUBLIC PARKING**

